

The SATAminijet 4400 B – User friendly features



Sturdy air cap made of chrome-plated brass.
New: Quick thread (only 1 1/4 turns) allows easy cleaning

Fluid tip and paint needle are made of corrosion-resistant stainless steel

New: Fluid tip seal requiring minimal cleaning effort and allowing safe colour changes

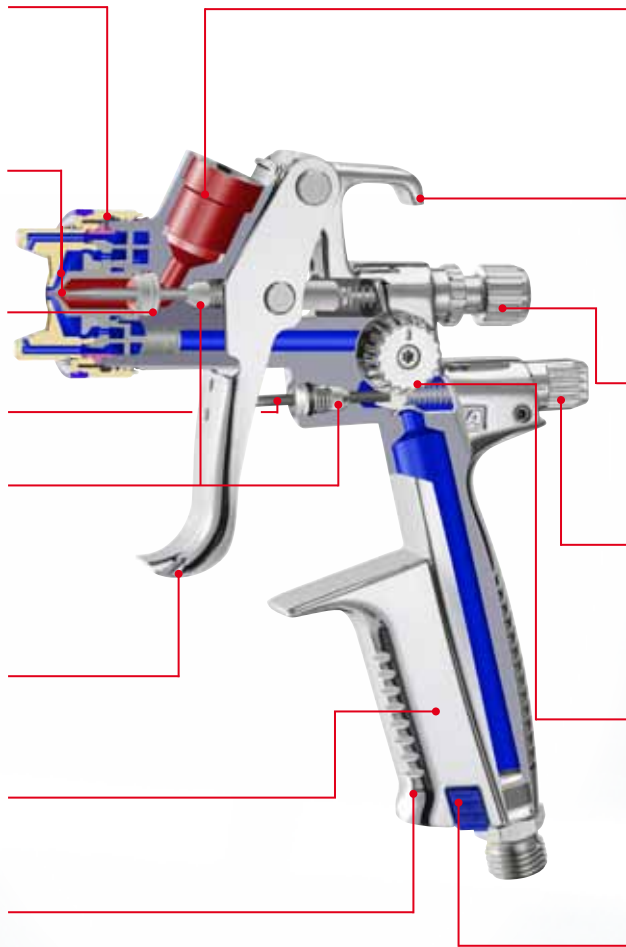
New: Reinforced air piston rod

Low-maintenance, self-adjusting air piston and paint needle seals. **New:** Paint needle can be easily fitted and removed

Trigger with paint needle protection for an extended lifetime of the paint needle packing

Easy to clean, corrosion-resistant chrome surface

New: Ergonomically shaped handle



New: Large QCC connection allows the use of all cup sizes – no adapter required – and allows easy cleaning of the material passage

Gun suspension hook for convenient storage

Adjustment elements can easily be operated even when wearing gloves:

New: Handy material flow control with quick thread



Air micrometer for high-precision adjustment of the atomisation air. Digital pressure display when using SATA adam 2 (optional)

New: Easy operation of round/flat spray control: Switching between round and flat fan can be effected with a 3/4 turn only



For the convenient identification of your spray gun.
New: Colour code can be exchanged without using a tool

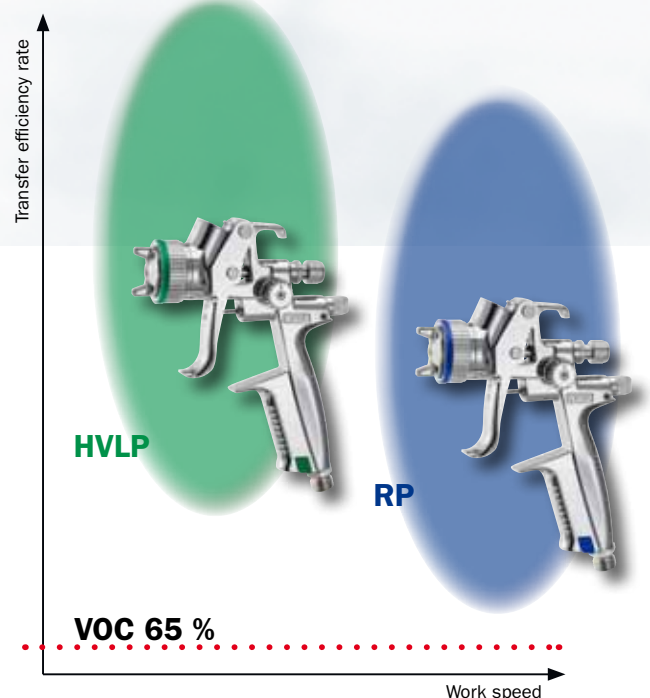


Two ways to reach a perfect result: HVLP and RP®

HVLP: Due to the low pressure technology, SATAminijet 4400 HVLP and HVLP SR spray guns achieve especially high transfer rates.

RP: The optimised high pressure technology now also allows maximum work speed with the SATAminijet 4400 RP and RP SR.

Both versions meet highest requirements for perfect finishes, while far exceeding 65% transfer efficiency rates in accordance with VOC legislation.



Perfect Finishes – SATAminijet 4400 B

	Standard nozzle sets					SR nozzle sets			
Nozzle size HVLP / HVLP SR	0,3	0,5	0,8	1,0	1,1	0,8 SR	1,0 SR	1,2 SR	1,4 SR
Nozzle size RP / RP SR	-	0,5	-	1,4	1,6	0,8 SR	1,0 SR	1,2 SR	-
Spray gun with 0.125 l QCC PVC reusable cup	197970	197988	197996	198002	198010	198069	198077	198085	198093
	-	202416	-	198234	198242	198200	198218	198226	-
Spray gun with 0.3 l RPS disposable cup Standard	-	-	-	-	-	198168	198176	198184	198192
	-	-	-	-	-	202390	198358	198366	-
Nozzle set	201194	201202	201210	201228	201236	201244	201251	201269	201277
	-	202408	-	201319	201327	201285	201293	201301	-

To choose the correct nozzle size, please contact your local SATA dealer or pay us a visit on our website:

www.sata.com/SATAminijet4400



HVLP / HVLP SR: air consumption at 2.0 bar: 120 NI/min
RP / RP SR: air consumption at 2.5 bar: 200 NI/min

Accessories:

Glass cup kit

for easy paint supply as well as quick colour changes.
25 ml glass cup (5x) with ...
... closing lid

Art. No. 58164

... plug-in lid

Art. No. 53033

Plug-in cup connection

with QCC

Art. No. 200220



SATA design set with SATAminijet 4400 B HVLP 1.0

and useful accessories for custom painting beginners:

- 125 ml QCC cup
- 2 plug-on glass pots 25 ml and 3 glass pots with blank lid
- 2 m air hose
- Cleaning and seal kit
- Tool kit

Art. No. 198382



SATA®RPS™

Replaces the reusable cup and fits without adapter. Reduces cleaning efforts and saves solvents.
Sizes: 0.3 l, 0.6 l and 0.9 l



SATA® adam® 2 mini

Compressed air micrometer with electronic pressure measurement.

Art. No. 160 879



Further useful accessories like air hoses, respirators, compressed air filters etc. are available from your SATA dealer.

Your SATA dealer



SATA GmbH & Co. KG
Domertalstr. 20
70806 Kornwestheim
Germany
Tel. +49 7154 811-200
Fax +49 7154 811-194
E-Mail: export@sata.com
www.sata.com

SATAmijnjet® 4400 B



German Engineering

Spray Guns | Cup Systems | Breathing Protection | Air Filtration | Accessories



For high precision work

SATaminijet 4400 B - Brilliance in Miniature

The SATaminijet 4400 B is the perfect compact spray gun if you are looking for superb finishes on areas of difficult access. The special SR nozzles are perfectly suitable for spot repairs on vehicles. It goes without saying that this spray gun allows the application of all modern paint systems – including waterborne paints.

Ergonomics

With its new, ergonomically shaped handle, the spray gun is perfectly balanced. All adjustment elements can be safely operated even when wearing gloves. Furthermore, the design of the round/flat spray control is geared to the SATaminijet 3000 B. The spray gun is sturdy and long-lasting; the spray fan can be exactly adjusted with a 3/4 turn only.

Enhanced durability

The spray gun body is equipped with a corrosion-resistant chrome surface. The sturdy air cap is made of

chrome-plated brass; paint needle and fluid tip are made of tempered stainless steel. The trigger protects the paint needle from overspray during painting, thus prolonging the lifetime of the paint needle seal. The air piston rod has been especially reinforced. All these features result in an extended spray gun lifetime.

Large QCC cup connection

The SATaminijet 4400 B allows the use of all three RPS cup sizes. Furthermore, the large connection makes the cleaning of the material passages extremely safe and easy.

SATaminijet 4400 B small size - big performance

- For small surfaces and areas of difficult access
- HVLP and RP nozzle sets
- Special SR nozzle sets for the smallest spot repairs (Spot repair)
- New ergonomically shaped handle
- Easy cleaning and maintenance
- Large cup connection QCC for all RPS cup sizes
- Highly flexible in terms of atomisation pressure and spray distance



Features of the SATaminijet 4400 B:



VOC-compliant atomisation technology - optionally available as HVLP low pressure or RP optimised high pressure technology



Innovative and versatile digital retrofit air micrometer



Perfectly suitable for the use of RPS disposable cups



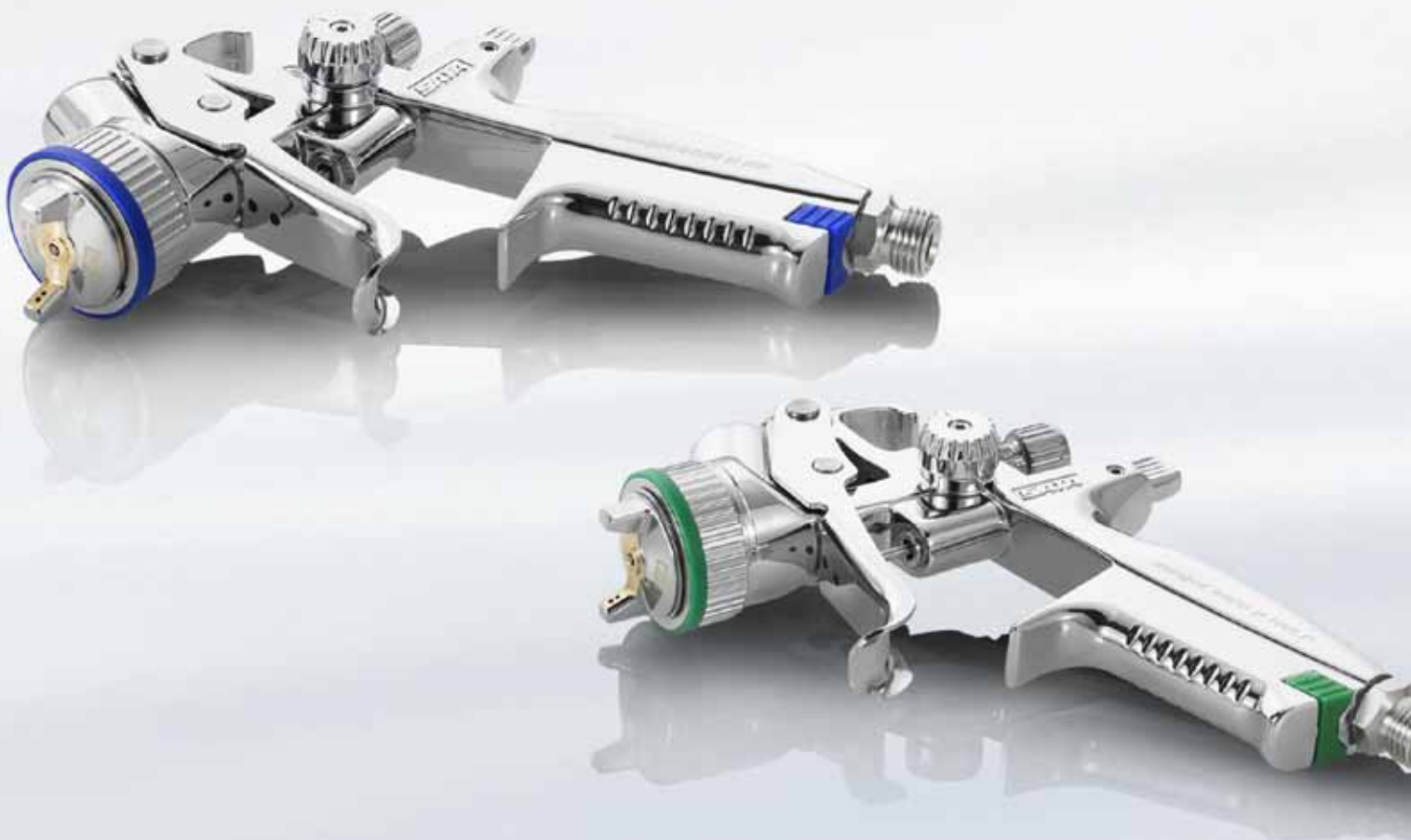
Cup connection for quick and clean cup changes as well as easy cleaning



For the convenient identification of your spray gun



Top quality is not enough - we guarantee it: for three years



SATaminijet 4400 B – now all RPS disposable cups fit on the large QCC cup connection – no adapter is required



The SATaminijet 4400 B is perfectly suitable for application on smaller surfaces – in both craft and industry



SATaminijet 4400 B - what nozzle set is suitable for which application?

Material or application	HVLP Standard	HVLP SR	RP Standard	RP SR
Car refinsh				
Filler/Primer	★★ 1,1	★★★ 1,2/1,4	★★★ 1,4 /1,6	★★★ 1,2
Spot Repair	-	★★★ 0,8-1,4	-	★★★ 0,8-1,2
Design	★★★ 0,3-1,1	★★ 0,8-1,4	★★★ 0,5-1,6	★★★ 0,8-1,2
Industrial applications				
Clear coat	★★ 0,5-1,0 ★★★ 1,1	-	★★ 0,5 ★★★ 1,4	-
Base coat/Single stage material	★★ 0,5-1,1	★★★ 1,2	★★ 0,5/1,6 ★★★ 1,4	★★ 0,8/1,0 ★★★ 1,2
Filler/Primer	★★ 1,1	-	★★★ 1,6	-
Wood				
Clear coat, 2K/Single stage coat	-	-	★★ 1,6	-
Base coat	★★ 0,8-1,1	★★★ 1,0-1,4	★★★ 1,4/1,6	★★★ 1,0/1,2
Stain	★★★ 0,3-1,1	-	★★★ 0,5 ★★ 1,4	-
Stain/Patination	★★★ 0,3-1,1	-	★★★ 0,5	-
Thick film	-	-	★★ 1,6	-
Marine				
Clear coat, 2K/Single stage coat	-	-	★★ 1,4 /1,6	★★ 1,2
Clear coat for wood painting	★★ 1,1	-	★★ 1,4 /1,6	-
Effect paint	-	★★ 1,0-1,4	★★ 1,4	★★ 1,0 /1,2
Primer	★★ 1,1	-	★★ 1,4 ★★★ 1,6	-

★★★ Perfectly suitable for nozzle set x,y

★★ Well suited for nozzle set x,y

★ Suitable for nozzle set x,y

Important: Please observe the technical data sheets of the paint manufacturers

HVLP and RP nozzle sets

With its standard HVLP and RP nozzle sets, the new SATaminijet 4400 B can be used in industry, craft and design when it comes to application on smaller surfaces or areas of difficult access.

SR nozzle sets for spot repair

The SR nozzle sets (now also available as RP version) are perfectly suitable for spot repairs. Compared to the standard nozzle sets, they feature a wide spray fan with wide-streched core area; colour deviations, and so-called "halos" can be easily avoided.

Fan Pattern Comparison*:

1.1 HVLP (at 2.0 bar)

Spray distance 15 cm

1.2 HVLP SR (at 2.0 bar)

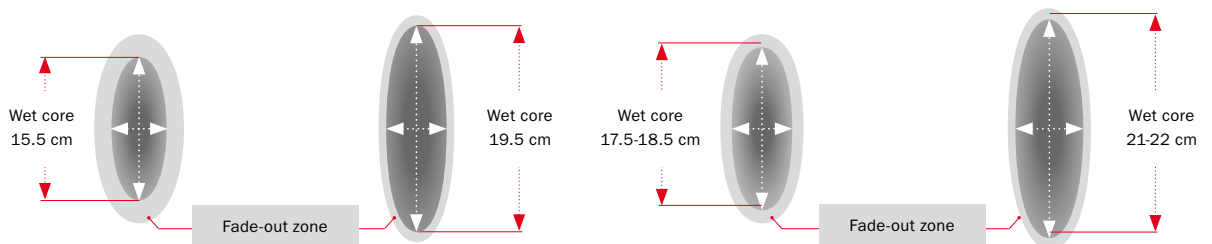
Spray distance 15 cm

1.6 RP (at 2.5 bar)

Spray distance 17 cm

1.2 RP SR (at 2.5 bar)

Spray distance 17 cm



Standard nozzles with wet, compact core. SR nozzles with wide-streched core.

*Diagram: Approximate data, may vary according to material and viscosity